



Earth Gear Australia

Full Equipment List

Excavators



Excavator 1.7t (Kubota)

Excavator 3t - 4.0t open ROPS (Kubota)

Excavator 3t - 4.0t air cab (Kubota)

Excavator 5.5t open ROPS (Kubota)

Excavator 5.5t air cab (Kubota)

Excavator 8t (Kubota/Yanmar)

Excavator 10t (Yanmar)

Excavator 13.5t - 15t Steel track (Kubota/CAT)

Excavator 13.5t - 15t Rubber track

Excavator 20 - 24t (Kobelco/CAT/Sumitomo)

Excavator 20 - 24t Reduced Radius (Kobelco)

Excavator 25 - 30t (Volvo)

Excavator 36t (Komatsu)

Excavator 45 - 50t (Komatsu)

**** Most machines are tilt hitch and full civil spec**

Excavator Attachments

Rockbreakers



Rockbreaker - 1.0t - 1.7t

Rockbreaker - 2.0t - 2.7t

Rockbreaker - 3.0t - 4.0t

Rockbreaker - 4.5t - 5.5t

Rockbreaker - 8t - 10t

Rockbreaker - 11t - 16t

Rockbreaker - 18t - 25t

Rockbreaker - 26t - 34t

Rockbreaker - 35t - 44t

Rockbreaker - 45t - 54t

**** Most machines are tilt hitch and full civil spec**

Hydraulic Grabs



Hydraulic Grab 3.0t - 4.0t

Hydraulic Grab 4.5t - 5.5t

Hydraulic Grab 8t - 10t

Hydraulic Grab 11t - 16t

Hydraulic Grab 20t - 25t

Hydraulic Grab 30t - 35t

Rotating Hydraulic Grab 11t - 16t

Sieve Buckets



Sieve Bucket - 4.5t - 5.5

Sieve Bucket - 8t - 10t

Sieve Bucket - 12t - 15t

Sieve Bucket - 18t - 24t

Sieve Bucket - 25t - 40t

Compaction Wheels



Compaction Wheel – 4.5t – 5.5t

Compaction Wheel – 8t – 10t

Compaction Wheel – 12t – 15t

Compaction Wheel – 20t – 25t

Compaction Wheel – 26t – 30t

Hydraulic Compaction Plates



Hydraulic Compaction Plate – 4.5t – 5.5t

Hydraulic Compaction Plate – 8t – 10t

Hydraulic Compaction Plate – 11t – 18t

Hydraulic Compaction Plate – 21t – 24t

Augers



Auger Drive 2t - 2.7t

Auger Drive 3.0t - 4.0t

Auger Drive 4.5t - 5.5t

Auger Drive 8t - 10t

Auger Drive 11t - 16t

Auger Drive 20t - 25t

Auger Drive 26t - 35t

Auger Extension 1m

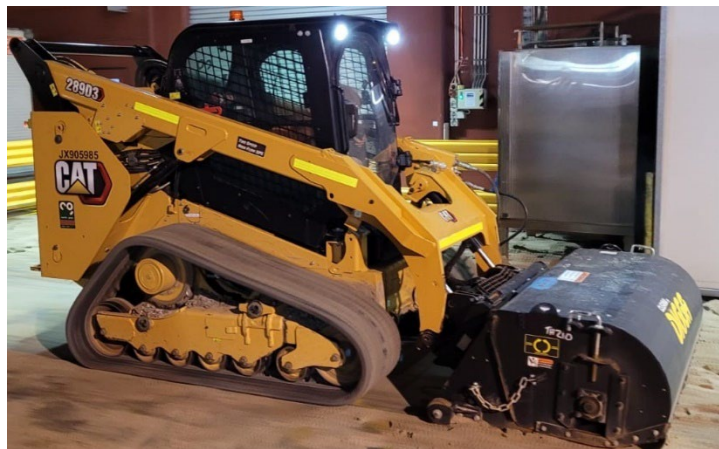
Auger Extension 1.5m

Pulverisers



Pulveriser 12t – 15t
Pulveriser 20t – 25t

Tracked Loaders



Tracked Loader – 50 - 60 hp (CAT 239/259)
Tracked Loader – 75 - 80 HP (CAT 289/Kubota SVL75/CASE)
Tracked Loader - 100 HP (CAT 299/Kubota SVL97/CASE)

Tracked Loader Attachments

Levelling Bar
Fork Tynes
Sweeper/Broom Attachment

Tracked Dozers



Tracked Dozer D65 – GPS (Komatsu)

Tracked Dozer D6 – GPS (CAT)

Tracked Dozer D85 (Komatsu)

Artic Dump Trucks



Articulated Dump Truck 25 – 30t (Komatsu/Volvo)

Articulated Dump Truck 40t (Komatsu/Volvo)

Wheeled Loaders



Wheeled Loader 2.5m³ bucket / Forks / 14t (CAT/Doosan/Komatsu)

Wheeled Loader 3.0m³ bucket / Forks / 15-18t (CAT/Komatsu)

Wheeled Loader 4.5-5m³ bucket / 25t (CAT/Komatsu)

Wheeled Loader 6.5-7.5m³ bucket / 37t (CAT/Komatsu)

Rollers



Roller Smooth 2-3t - Double Drum (Bomag/CAT)

Roller Smooth / Pad 12t - Single Drum (Bomag)

Trailers & Ramps



Water Trailer 1200L Petrol

Plant Trailer - Tandem 2.5t GVM

Ramps - Aluminium 6t, 3.6m

Tipper



Tipper - 4t Payload 7.5t GVM LR (Fuso/Isuzu)

Tipper - 5.5t Payload 11t GVM MR (Fuso/Isuzu)

Tipper - 7.5t Payload 14t GVM MR (Fuso)

Tipper - 10m³/15t Payload 24t GVM HR (Fuso)

Site Establishment



**Rumble Grid
Road Plate**